

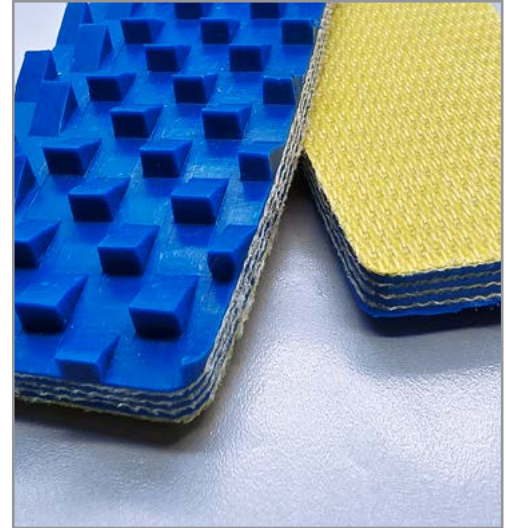
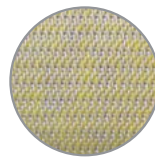
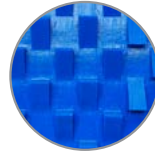
## Model No. PVC/COCO/AC/12.4 DOUBLE DIRECTION

### > Technical data sheet

• Industrial application



COMPOSITION		
Top Conveying surface	Material	PVC
	Thickness	6.0 mm
	Surface pattern	Cocodrilo D.D
	Colour	Blue
	Hardness	55 Shore A
Textile carcass	Material	Polyester (PET)
	Piles no.	4
	Weft type	Rigid
Bottom Driving surface	Material	Impregnation Fabric
	Thickness	- mm
	Surface pattern	Fabric
	Colour	Light Yellow



### TECHNICAL SPECIFICATIONS

Total thickness	12.0	mm
Weight	13.0	kg/m <sup>2</sup>
Elongation at 1%	40	N/mm
Breaking load	-	N/mm
Temperature resistance	min.	-10 °C
	max.	+80 °C

\*Use of the belt with limit values may reduce its life.

#### ● Minimum radius / diameter Pol Vester (Pet)

Knife edge minimum radius	-
Bending roller min. diameter	400 mm
Counter-bending roller min. Diameter	600 mm

#### ● Coefficient of friction on driving surface

Steel sheet	0.28
Laminated plastic/wood	0.28
Steel roller	0.28
Rubberized roller	0.30

#### ● Max. Production width

3000 mm

### SUITABLE FOR

General purpose of light and heavy duty conveying system.  
Marble industry, Ceramic tiles industry.

### TECHNICAL SPECIFICATIONS

Humidity influence	No
Suitable to metal detector	No
Conveying on skid bed	Yes
Conveying on rollers	Yes
Inclined conveying	No
Troughed application	No
Flame retardant	No
Curved conveyor	No
Chemical resistances	Limited
Oil and fat resistance	Limited
Food grade	No
Antistatic AS	No

### JOINT METHOD

Single finger  
Overlap Joint  
Mechanical fastener

### TECHNICAL SPECIFICATIONS

Upper platen temp	180 °C
Bottom platen temp	180 °C
Curing time	3 Min
Pressure	1.5 Bar

#### DISCLAIMER

The specifications and values mentioned in the technical data sheet are drawn from the laboratory department of the company's factory, and Righa for Trading and Manufacturing SLU (RIGALLI) is not responsible for any change or modification of these values or specifications.