

Model No. PVC/RH/GR/2.8-2 HG

COMPOSITION

Top Conveying surface	Material	PVC
	Thickness	1.0 mm
	Surface pattern	Rhombus
	Colour	Gray
	Hardness	35 Shore A
Textile carcass	Material	Polyester (PET)
	Piles no.	2
	Weft type	Rigid
Bottom Driving surface	Material	Fabric
	Thickness	- mm
	Surface pattern	Low noise
	Colour	White

TECHNICAL SPECIFICATIONS

Total thickness	2.8	mm
Weight	2.9	kg/m ²
Elongation at 1%	10	N/mm
Breaking load	140	N/mm
Temperature resistance	min.	-10 °C
	max.	+80 °C

*Use of the belt with limit values may reduce its life.

● Minimum radius / diameter Pol Vester (Pet)

Knife edge minimum radius	-
Bending roller min. diameter	40 mm
Counter-bending roller min. Diameter	60 mm

● Coefficient of friction on driving surface

Steel sheet	0.18
Laminated plastic/wood	0.20
Steel roller	0.18
Rubberized roller	0.25

● Max. Production width

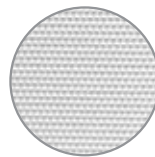
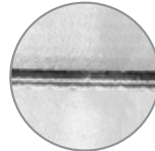
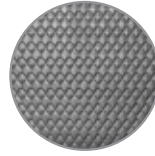
3000 mm

SUITABLE FOR

General purpose of light duty conveying system.
Packing industry.
Sorting and recycling industry.
Logistics.

> Technical data sheet

- Industrial application
- Food application



TECHNICAL SPECIFICATIONS

Humidity influence	No
Suitable to metal detector	No
Conveying on skid bed	Yes
Conveying on rollers	Yes
Inclined conveying	Yes
Troughed application	No
Flame retardant	No
Curved conveyor	No
Chemical resistances	Limited
Oil and fat resistance	Yes
Food grade	No
Antistatic AS	Yes

JOINT METHOD

Single finger	Diagonal finger Mechanical fastener
Double finger	
Overlap joint	

TECHNICAL SPECIFICATIONS

Upper platen temp	175 °C
Bottom platen temp	175 °C
Curing time	3 Min
Pressure	1.5 Bar

DISCLAIMER

The specifications and values mentioned in the technical data sheet are drawn from the laboratory department of the company's factory, and Righa for Trading and Manufacturing SLU (RIGALLI) is not responsible for any change or modification of these values or specifications.